



Pear tree Hill Solar Farm

Environmental Statement

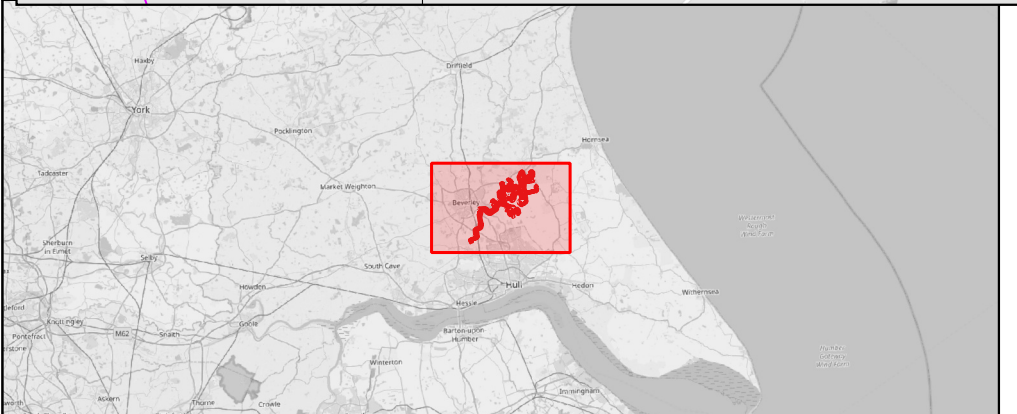
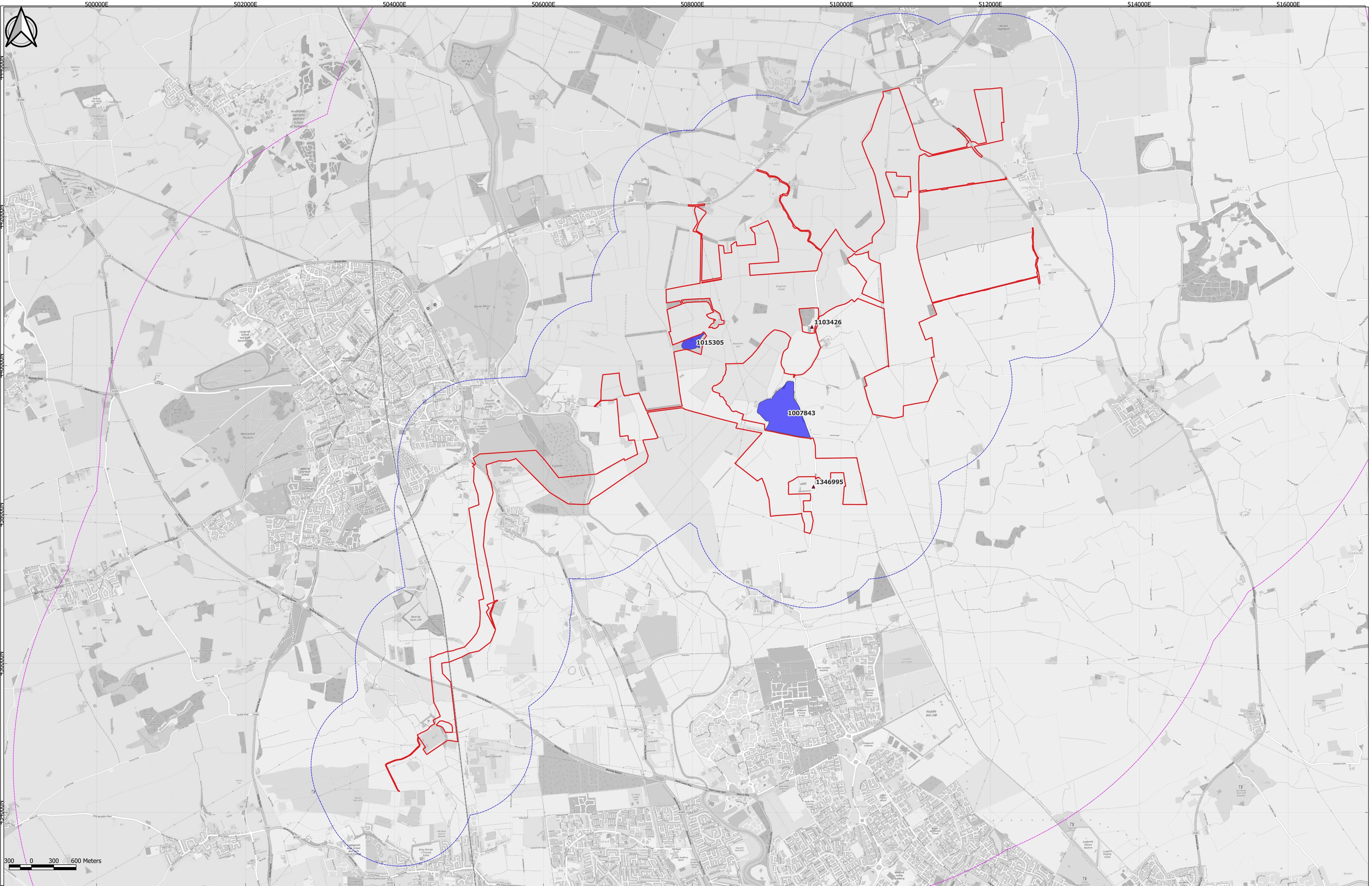
Volume 3

Figure 9.2: Assessed Designated Heritage Assets

Revision 2

Application Document Ref: EN010157/APP/6.3
September 2025

Planning Act 2008
Infrastructure Planning
(Applications: Prescribed Forms
and Procedure) Regulations 2009 –
Regulation 5(2)(a)



- Key**
- Order Limits
 - 1km study area
 - 5km study area
 - Scheduled Monuments
 - Listed Buildings

© Historic England

Notes:
Document reference: EN010157/APP/6.3

PO2	28/08/2025	EI	MM	LR	AT
App	Date	By	Chkd	Appd	Authd

Client

RWE

Designer

RSK

Project Name
Peartree Hill Solar Farm

Drawing Title
Environmental Statement Volume 3, Figure 9.2: Assessed Designated Heritage Assets

SHEET 1 OF 1

Scale at A1 1:23200	Coordinate System: British National Grid
Status DCO Application	
PINS Number EN010157/APP/6.3	Rev P02

RWE Renewables UK Limited

Windmill Hill Business Park,
Whitehill Way,
Swindon,
Wiltshire,
England,
SN5 6PB
www.rwe.com